

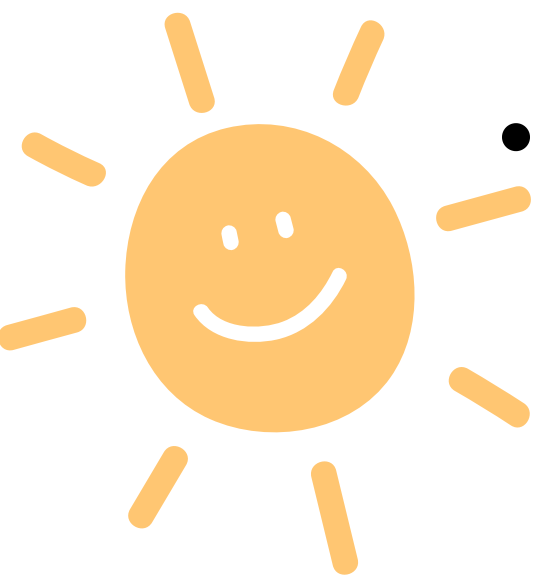
# Attendance



## is important



- **Early Head Start** strives to help as many children and families as possible providing services such as family support, education & childcare.



- **Early Head Start** is a 5 day per week program, and the positive outcomes of regular attendance are based on attending a **minimum of 3 days per week**.



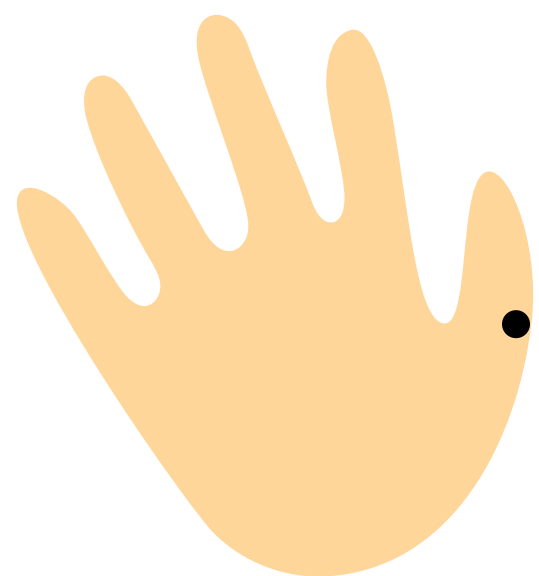
- Establishing the habit of **regular attendance** in childcare helps create routines and consistency for children which contribute to children's ability and opportunities to meet developmental milestones. Meeting these milestones positively affects children's later success as they transition to school.



- We understand that there are times in the year where your child might be sick (**has a fever, is vomiting or has diarrhea**) Or there might be a family situation/barrier and we want to help any way we can!



- If at any time throughout the year attendance drops below a certain %, we will reach out to you to assist with any barriers limiting your child from attending Early Head Start regularly. This may include an **attendance success plan** or other appropriate strategies to support regular attendance.



- If regular attendance cannot be maintained your child **may be placed back on the waitlist**.



- **Communication** is key, so if there are any changes in attendance or plans, keeping center staff and the family specialist informed is important.